



ROUNTREE
TRYON
GALLERIES

BIRDS AND WILDLIFE

23 November – 16 December 2017
Rountree Tryon Petworth

FRONT COVER: EMMA FAULL (b. 1956)

Martial eagle

Indian ink and gouache

22¼ x 26¼ in. (56.5 x 66.5 cm)

£3,500

BIRDS AND WILDLIFE

23 November – 16 December 2017

Rountree Tryon Petworth





PAUL AUGUSTINUS (b. 1952)
Kolwezi
oil on canvas
signed and dated 'Paul Augustinus/ 2015' (lower right)
31½ x 74¾ in. (80 x 121.3 cm)
£18,500



RODGER MCPHAIL (b. 1953)
Red-necked phalaropes
oil on paper
signed 'R. McPhail' (lower left)
11 x 5¾ in. (28.2 x 14.2 cm)
£1,950



RODGER MCPHAIL (b. 1953)
Rooks
oil on paper
signed 'R. McPhail' (lower right)
12 x 8 in. (31.3 x 20.4 cm)
£2,250



RODGER MCPHAIL

(b. 1953)

Grey-crowned cranes

oil on paper

signed 'R. McPhail' (lower right)

10¾ x 14¾ in.

(27.5 x 37.5 cm)

£3,500

RODGER MCPHAIL

(b. 1953)

Ringed plover

oil on paper

signed 'R. McPhail'

(lower right)

6 x 11½ in.

(15 x 29 cm)

£2,950



DAVID ORD KERR

(b. 1952)

Cape teal

oil on board

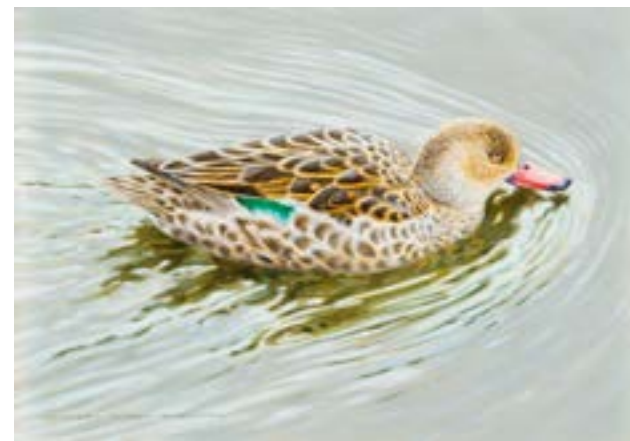
signed 'DAVID ORD

KERR' (lower left)

5½ x 8 in.

(13.9 x 20.5 cm)

£950





RAY HARRIS-CHING (b. 1939)

Goosanders

oil on panel

signed and dated 'R. Harris-Ching/ 1994' (lower left)

20 x 33¼ in. (50.5 x 84.2 cm)

£12,500

BASIL EDE (1931–2016)

Barn owl

oil on canvas

signed 'BASIL EDE'

(lower right)

24 x 20 in. (61 x 50.8 cm)

£8,500





BASIL EDE (1931–2016)
Great blue heron
watercolour
inscribed, signed and dated
'Great Blue Heron – Ardea
herodias/ © BASIL EDE 1979'
(lower left)
11¼ x 15 in.
(19.6 x 29.8 cm)
£1,250



BASIL EDE (1931–2016)
Great crested grebe
watercolour
signed and dated '© BASIL
EDE 1976' (lower left)
7¾ x 11¾ in.
(19.6 x 29.8 cm)
£1,750

BASIL EDE (1931–2016)
Dipper (February)
watercolour
signed and dated '© BASIL
EDE 1978' (lower right)
7¾ x 11¾ in.
(19.4 x 29.7 cm)
£1,750



BASIL EDE (1931–2016)
Barn swallow at nest
watercolour
signed and dated '© BASIL
EDE 1978' (lower left)
7¾ x 11¾ in.
(19.6 x 29.8 cm)
£1,250





EMMA FAULL (b. 1956)
Owl
Indian ink and gouache
11½ x 8¼ in.
(29 x 20.6 cm)
£1,950



EMMA FAULL
(b. 1956)
*Sun bittern on a
bed of leaves*
watercolour
20¼ x 29¼ in.
(51.5 x 74.5 cm)
£3,950

EMMA FAULL (b. 1956)
Fieldfare
Indian ink and gouache
9¾ x 11¾ in.
(24.5 x 29.7 cm)
£2,250



GEORGE LODGE
(1860–1954)
Brambling
watercolour and gouache
signed 'G. E. Lodge'
(lower right)
11½ x 7¾ in.
(29 x 19.4 cm)
£1,750





JOHN CYRIL HARRISON (1898–1985)
Bateleur eagles
watercolour
signed 'J. C. Harrison' (lower right)
19¾ x 14¾ in. (50.3 x 37.5 cm)
£3,500



JOHN CYRIL HARRISON (1898–1985)
Marsh and African black harriers
watercolour
signed 'J. C. Harrison' (lower right)
19¾ x 14¾ in. (50.3 x 37.5 cm)
£3,500



NIGEL HUGHES (b. 1940)
American black vulture
(Coragyps atratus)
oil on canvas
signed with monogram and
dated '2013' (lower left)
26½ x 22 in. (67.5 x 56 cm)
£7,500



NIGEL HUGHES (b. 1940)
Greater yellow-headed vulture
(Cathartes melambrotus)
oil on canvas
signed with monogram and
dated '2013' (lower left)
26¾ x 22½ in. (68.1 x 57.3 cm)
£7,500



BEATRICE FORSHALL (b. 1992)
Crane
hand-painted drypoint engraving
signed 'Beatrice Forshall' (lower right)
and numbered '2/25' (lower left)
39½ x 29¼ in. (100 x 74 cm)
£895



BEATRICE FORSHALL (b. 1992)
Palm cockatoo
hand-painted drypoint engraving
signed 'Beatrice Forshall' (lower right)
and numbered '4/25' (lower left)
33¼ x 29½ in. (84.5 x 75 cm)
£785



BEATRICE FORSHALL (b. 1992)
Toco toucan
hand-painted drypoint engraving
signed 'Beatrice Forshall' (lower right)
and numbered '4/25' (lower left)
26 x 24¼ in. (66 x 61.5 cm)
£750

BEATRICE FORSHALL (b. 1992)
Red and yellow barbet
hand-painted drypoint engraving
signed and numbered 'Beatrice Forshall/
AP' (lower left)
27¾ x 35¼ in. (70.5 x 89 cm)
£895



STEPHEN HENDERSON (b. 1956)
Pair of shorebirds
eastern white pine on driftwood wedge
10¼ x 13¾ x 4½ in.
(25.4 x 34.7 x 11.5 cm)
£595



STEPHEN HENDERSON (b. 1956)
Spotted redshank
eastern white pine on painted driftwood base
signed and titled 'Stephen Henderson/
Spotted redshank' (on base)
14¼ x 12¼ x 7½ in.
(36.5 x 31.2 x 19 cm)
£345





STEPHEN HENDERSON (b. 1956)
Pink fish and fry
eastern white pine with steel fins and tail and
weathered wire on driftwood base
signed and titled 'Stephen Henderson/
pink fish and fry' (on base)
17¾ x 23½ x 18¾ in. (44 x 59.8 x 47.6 cm)
£1,850



STEPHEN HENDERSON (b. 1956)
Bee eaters resting
eastern white pine on salvaged iron,
all on weathered hardwood
signed and titled 'Stephen Henderson/
Bee eaters resting' (on base)
16¾ x 33½ x 17½ in. (42.6 x 85 x 44.5 cm)
£3,450





ANDREW STOCK
(b. 1960)
Riding the updraft
oil on board
signed 'Andrew Stock'
(lower right)
36 x 24¼ in.
(91.5 x 61.2 cm)
£5,900



ANDREW STOCK (b. 1960)
Kingfisher in Lyme Regis harbour
oil on paper
signed 'Andrew Stock' (lower right)
23½ x 36¾ in. (59.8 x 93 cm)
£5,750



ANDREW STOCK (b. 1960)
Black-tailed godwit studies
pencil and watercolour
annotated throughout; titled and dated
'Black tailed Godwit/ 22nd May' (upper
centre); signed 'Andrew Stock'
(lower right)
10½ x 9½ in. (27 x 24 cm)
£750



ANDREW STOCK (b. 1960)
Turnstone studies
pencil and watercolour
signed 'Andrew Stock' (lower centre);
dated '12th May' and annotated
(lower right)
9 x 13½ in. (23 x 34 cm)
£900



CAMILLA LE MAY (b. 1973)
Jackass penguins
bronze, 7 of 12
initialled and numbered 'CLM 7/12'
7 x 7½ x 3½ in. (17.5 x 19 x 8.8 cm)
£1,950

KEITH SHACKLETON
(1923–2015)
A pair of nuthatch
oil on board
initialled 'KS' (lower right)
18 x 17¾ in. (45.7 x 45 cm)
£2,500



KEITH SHACKLETON
(1923–2015)
Walrus
oil on board
signed and dated 'Keith
Shackleton '91' (lower left)
14 x 18 in. (35.8 x 45.6 cm)
£4,950





TUËMA PATTIE (b. 1938)
Antarctic terns
oil on canvas
12 x 47¼ in. (30.2 x 119.6 cm)
£1,350



TUËMA PATTIE (b. 1938)
Ice shelves with gentoo penguins
oil on canvas
12 x 16 in. (30.4 x 40.4 cm)
£650



TUËMA PATTIE (b. 1938)
Galapagos hawk
oil on canvas
74¼ x 79 in. (188.5 x 200.5 cm)
£6,000



JEREMY HOUGHTON (b. 1974)

City of stars

oil on canvas

19¾ x 19¾ in. (49.8 x 49.9 cm)

£3,500

JEREMY HOUGHTON (b. 1974)

Heavens above

oil on canvas

28¾ x 60 in. (71.6 x 152.5 cm)

£12,000



JEREMY HOUGHTON

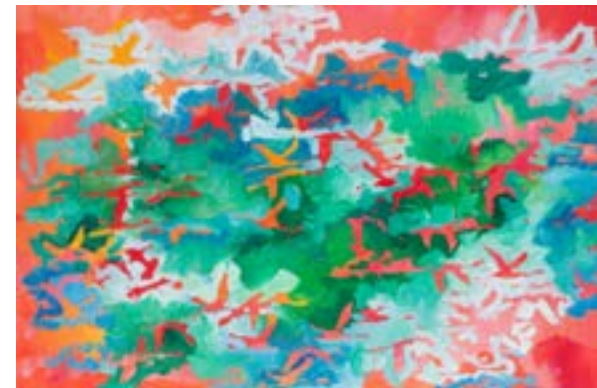
(b. 1974)

Half undressed

oil on canvas

19¾ x 30 in. (50.2 x 75.9cm)

£4,500



JEREMY HOUGHTON

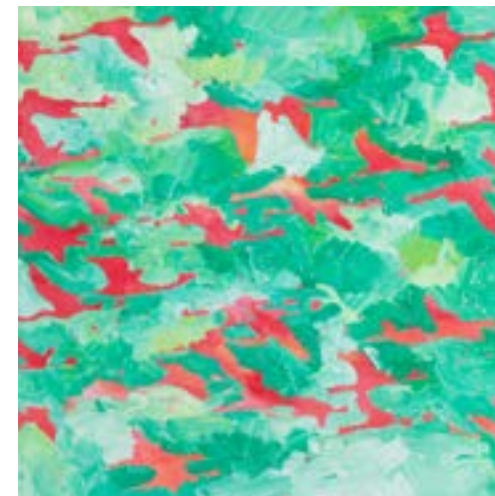
(b. 1974)

Secret garden

oil on canvas

19¾ x 19¾ in. (50.1 x 50.3 cm)

£3,250





CATHERINE CLANCY (b. 1955)
There is flight, study one
 ink
 signed and dated 'Clancy 2017'
 (lower right)
 10 x 15½ in. (25.4 x 39.5 cm)
 £800



CATHERINE CLANCY (b. 1955)
There is flight, study two
 ink
 signed and dated 'Clancy 2017'
 (lower right)
 10 x 15½ in. (25.4 x 39.5 cm)
 £800



CATHERINE CLANCY (b. 1955)
There is flight, study three
 ink
 signed and dated 'Clancy 2017'
 (lower right)
 8 x 11¾ in. (20.5 x 29.5 cm)
 £600



CATHERINE CLANCY (b. 1955)
There is flight, study four
 ink
 signed and dated 'Clancy 2017'
 (lower right)
 8 x 11¾ in. (20.5 x 29.5 cm)
 £600

KNOX FIELD (b. 1990)
Hummingbird
 bronze, 3 of 12
 signed, dated and numbered 'KNOX
 2016/ 3/12'
 15¾ x 8 x 6¾ in. (40 x 20 x 17 cm)
 £3,300



KNOX FIELD (b. 1990)
Stalking tiger
 bronze, 3 of 12
 signed, dated and numbered
 'KNOX 2014/ 3/12'
 7 x 15¼ x 4¾ in.
 (17.5 x 38.7 x 11.5 cm)
 £3,200





MANDY SHEPHERD

(b. 1960)

Panda

oil on canvas

33¼ x 23½ in.

(84.2 x 59.5 cm)

£4,950

WILHELM KUHNERT (1865–1926)

Opossum

pencil

signed 'Wilhelm Kuhnert' (lower left)

and annotated (upper right)

6¾ x 11 in. (16.8 x 27.8 cm)

£950



WILHELM KUHNERT (1865–1926)

Violet manucode, black-throated finch,

masked finch and crimson finch studies

pencil

signed 'Wilhelm Kuhnert' (lower centre)

and annotated throughout

8¾ x 12¼ in. (22.8 x 31.8 cm)

£950



HAROLD FRANK WALLACE

(1881–1962)

The Old Fir

gouache

inscribed 'Rothiemurchus' (lower left)

14 x 20¼ in. (35.4 x 51.8 cm)

£2,950





WILLIAM SIDNEY COOPER (1854–1927)

A pastoral scene

oil on canvas

20 x 30 in. (50.7 x 76.2 cm)

£5,800



MARMADUKE CRADOCK (1660–1717)

Peacocks

oil on canvas

24¾ x 30 in. (62.8 x 76.2 cm)

£5,800



DYLAN LEWIS (b. 1964)
Standing oriental cat
bronze, 4 of 15
signed and numbered 'Dylan Lewis 4/15'
23½ x 21 x 8 in. (59.8 x 53.4 x 20.2 cm)
£11,000



DYLAN LEWIS (b. 1964)
Stretching oriental cat
bronze, 7 of 15
signed and numbered 'Dylan Lewis 7/15'
13¼ x 22½ x 3¼ in. (33.5 x 57 x 8.3 cm)
£10,000



**RICHARD BARRETT
TALBOT KELLY**
(1896–1971)
Uganda elephant
watercolour
7½ x 10¾ in.
(19 x 27.6 cm)
£320



**RICHARD BARRETT
TALBOT KELLY**
(1896–1971)
Female mallard
watercolour
16½ x 20½ in.
(41.6 x 52.1 cm)
£620

CHLOE TALBOT KELLY (b. 1927)
Little African bee-eater
watercolour and gouache
signed and dated 'C. E. Talbot Kelly
'76' (lower left)
6¾ x 4 in. (16.8 x 10.1 cm)
£420



CHLOE TALBOT KELLY (b. 1927)
Red-cheeked cordon-bleu
watercolour and gouache
signed and dated 'C. E. Talbot Kelly
'79' (lower left)
8¼ x 6¼ in. (20.6 x 15.5 cm)
£480



CHLOE TALBOT KELLY (b. 1927)
Mountain Lodge, Mount Kenya
watercolour
signed and dated 'C. E. Talbot Kelly
'79' (lower left)
14¼ x 19½ in. (36 x 49.2 cm)
£980





CONTACTS

Jamie Rountree
Chantelle Rountree
Natalie Hume
Amy Homewood

Director
Associate Director
Gallery Manager
Gallery Administrator

jamie@routreetryon.com
chantelle@routreetryon.com
natalie@routreetryon.com
amy@routreetryon.com

The Old Tavern,
Market Square, Petworth,
West Sussex GU28 0AH

+44 (0)1798 344 207
routreetryon.com

Monday–Friday 10am–6pm
Saturday 11am–4pm

BACK COVER: ANDREW STOCK (b. 1960)
Kingfisher in Lyme Regis harbour
(detail)



ROUNTRETRYON.COM
PETWORTH